

On the Right Track

FEBRUARY 2020

LINK TO CLUB PHOTOGRAPH GALLERY



CLUB NEWSLETTERS

The following link will take you to the archived copies of the newsletters that reside on the Google Drive.



LINK TO BACHMANN 2020 CATALOGUE



LINK TO MTH 2019 - 2020 CATALOGUE



LINK TO MANUALS

A selection of manuals and guide documents.



CLUB HOURS

Tuesday 7:30 pm to 10:00 pm

Thursday 2:00 pm to 5:00 pm

Saturday 12:00 pm to 5:00 pm

Saturday - First Saturday in the month

Public Open Day 1:00 pm to 5:00pm

At least one committee member must attend each session. Depending on demand, an earlier closing time may occur.

Club Open Days

1:00 pm to 5:00 pm

The club holds a public Open Day on the first Saturday of each month

Members to be available from 12:00 pm and trains to be running for the entire afternoon

LAYOUT DEVELOPMENTS

Lakeside extension is going well. Scenery is being added to the new modules and it is hoped that it will be available for testing and initial display on the public open day on Saturday 7th. March.

Frosty, Ron Weeden, Allan Smith, John Cutler and many others are to be congratulated on their sterling efforts.

All of those involved in the work are to be congratulated. Club members must appreciate the work done by these people in providing top notch facilities for all the membership to enjoy.

The main layout will be available for use during the outage of Lakeside. Some minor repairs will be made to the scenery on the main layout as time permits.

FUND RAISING

Apart from membership subscriptions, the major sources of fundraising are:
the occasional Bunnings Sausage Sizzle and Revenue from Swap Meets and Exhibitions.
The weekly dibs help with some of the minor expenses.

The club has been accepted to participate in the sausage sizzle fund raising activities at the new Bunnings Reynella Warehouse on Panalatinga Road. Dates allocated are:

Sunday 26th April 2020 and,

Friday 29th. May 2020

Volunteers required, further details to be advised on club noticeboard.

Remember, if you can assist in volunteering for some of these club activities it helps to make the club a better place and eases some of the

pressure on those members who contribute on a continual basis.

The club also has some quality merchandise for sale. Club Logo pens and Computer Mouse Pads. Pens \$4.00 and Mouse Pads \$6.00.

VIDEO LIBRARY

The efforts of former club member Vic Tilling in providing a great selection of videos that show both of our layouts are greatly appreciated.

A selection is displayed in the club Galleries.

[Club Video Gallery](#)

Vic also has his own YouTube site

[Vic Tilling](#)

This site provides links to Vic's YouTube videos of both model railways and general Train videos.

TRADE SUPPORTERS OF THE CLUB

The following suppliers provide continuing support for the club's activities. Please use their services when you can.

Drakes Foodland Community Dollars

Tokens

Are you still using your Drakes Foodland Community Dollars token? Using the token at any Drakes Foodland store builds funds onto a gift card for the club: the more that you use the token, the more valuable is the gift card... See Jeff Kohler, AKA Frosty, if you do not have one.





Web Link: www.papworthsecurity.com.au

FUTURE EVENTS FOR YOUR DIARY



Model Railway Swapmeet

When: Sunday 15th. November 2020
10:00 am—1:00 pm

Where: N.M.R.I. Club Rooms
163 Old South Road
Old Reynella
(Next to Bus interchange)

What: Model trains, track, magazines,
buildings, kits, cars, books etc.
Tea, coffee and cold drinks
available
Sausage Sizzle BBQ

Cost: Admission \$3.00

Sellers: \$25 per table, size 1800x750mm
Maximum two persons per table please

Bookings and information:

Email: admin@noarlungarail.com
Club phone: 8322 7047 (101 messaging)
Post: PO Box 707, Morphett Vale, SA 5162

Monday 20th. April 2020

**Lakeside on Display
Eldercare Seaford**

Volunteers Required.

Details to be advised closer to the date. See the club notice board.



Model Railway Swapmeet

When: Sunday 19th. April 2020
10:00 am—1:00 pm

Where: N.M.R.I. Club Rooms
163 Old South Road
Old Reynella
(Next to Bus interchange)

What: Model trains, track, magazines,
buildings, kits, cars, books etc.
Tea, coffee and cold drinks
available
Sausage Sizzle BBQ

Cost: Admission \$3.00

Sellers: \$25 per table, size 1800x750mm
Maximum two persons per table please

Bookings and information:

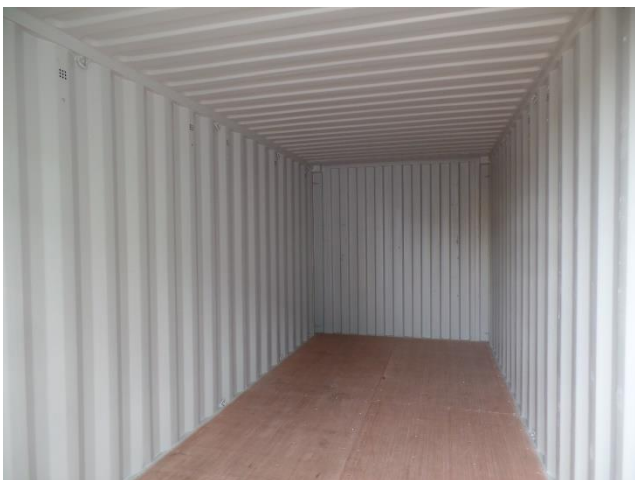
Email: admin@noarlungarail.com
Club phone: 8322 7047 (101 messaging)
Post: PO Box 707, Morphett Vale, SA 5162

FURTHER NEWS

Onkaparinga Council has granted approval for the installation of an external storage container on the club site. This will be used to store the club trailers and other items so that we can free up space in the main clubrooms to facilitate the expansion of Lakeside and the creation of a small N Gauge layout for the use of members and as an additional display layout.

A suitable container has been sourced and will be delivered to the club site on Thursday 12th. March. Site preparation will take place on Saturday 7th. March.

Any help will be greatly appreciated.





**Archive Photographs of the Main
Layout Construction.**

Courtesy: Vivien Crossley



CLUB NEWSLETTER

All members are invited to contribute to the publication of the monthly newsletter. If you have any items that you think will be of interest to the membership, please provide the details to the Secretary or any other committee member.

It is difficult to produce the newsletter if there is no support by way of contributions.
